

PRINTABLE INFO SHEET

Series: Richland ELITE Ranch

Model: GF3010-V



About This Model

Style: Ranch / Bedrooms: 3 / Bathrooms: 2 / Square Feet: 1920

CUSTOMER CONTACT

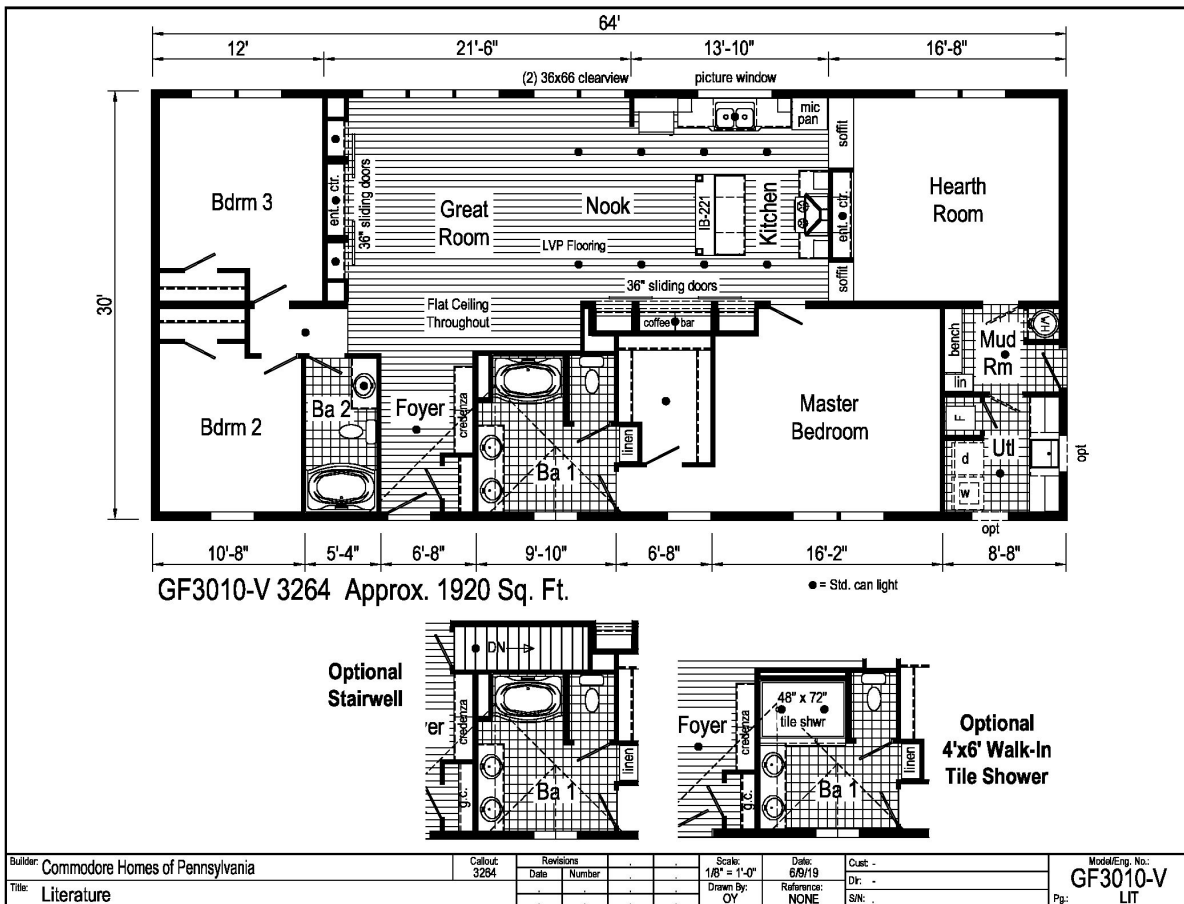
Notes:

PRINTABLE INFO SHEET

Series: Richland ELITE Ranch
Model: GF3010-V



Floorplan



CUSTOMER CONTACT

Notes:

PRINTABLE INFO SHEET

Series: Richland ELITE Ranch
Model: GF3010-V



Standards & Features

Interior

8' Flat Stipple Ceilings

Profile Moulding Package

Ceiling Cove

Primed Finished Drywall Throughout

LED Lighting

Pre-Hung Door Jambs

Mortise Hinges

30" 2-Panel White Passage Doors

Metal Interior Passage Sets

Floor Mount Door Stops

Smoke Detectors with Battery Back-Up

Wire Shelving in Guest Closet

Designer-Coordinated Window Treatments

Picture Window over Kitchen Sink

2 Clearview Windows in Nook - per model

Exterior

Gatsby Light at Front and Rear Door

GFI-Protected Exterior Receptacle

Vinyl Dutch Lap Siding

OSB Sheathing Under Siding

w/ Windwrap

Shingle Roof with 10" Eaves

Ridgevent Roof Ventilation System

38x80 6-Panel Fiberglass Front Door with

Deadbolt Lock

6-Panel Fiberglass Rear Door 34x80

12" Raised Panel Shutters on Front Door

Side

Construction

Transverse Floor System:

Construction (continued)

2x6 on 24 and 28 Wide Models

2x8 on 32 Wide Models

**2x6 Exterior Walls on 16" Centers

20# Roof Load

Recessed Frame Design

Kitchen

18 CF, Black Frost Free Refrigerator

30" Black Gas Range

Stainless 30" Range Hood

Stainless Steel Sink - 33x22x8

Structured Flow Hi-Rise Brushed Nickel Faucet

Beverage Center w/Barn Style Sliding

Doors, Wine Rack, & Open Shelving

Butler Pantry w/Storage Shelves & Small

Appliance Center (Most Models)

42" Overhead Cabinets

Soft Close Cabinet Doors

4" Ceramic Backsplash on Sink Wall

Full Ceramic Backsplash Range Area

LED Lighting

Baths

60" One Piece Fiberglass Garden

Tub/Shower

Deluxe Shower Drape at 60" Tubs

1.6 Gallon Per Flush Elongated Toilets

Square China Lav Sinks

Lighted Vent Fan in Each Bath

Brushed Nickel Metal Faucets -Structured Flow

Vanity Light in Master Bath

CUSTOMER CONTACT

Notes:

PRINTABLE INFO SHEET

Series: Richland ELITE Ranch
Model: GF3010-V



Standards & Features (continued)

4" Ceramic Backsplash in Baths **Cabinetry**

Classic Craft Custom Cabinetry
(KCMA Certified)

Hardwood Mission Cabinet Doors

Hardwood Stiles
Hardwood Cabinet Crown Moulding
Hardwood Under Cabinet Moulding
Drawer Over Door Base Cabinets
Soft Close Cabinet Doors
Concealed Cabinet Hinges
Adjustable Shelves in Overhead Cabinets
Undermount Soft-Close Drawer Guides
Adjustable Center Shelf in Base Cabinets
Laminate Countertops with Crescent Edge
Base Shelf in Vanities
36" High Vanities

Utilities

Washer and Dryer Area
-Plumb and Wire for Washer Including
Quarter Turn Valve
-Wire and Vent for Dryer
100 AMP Electrical Service
Copper Wiring Throughout
40 Gallon Electric Water Heater
with Pan
Programmable Thermostat Wi-Fi
Gas Furnace
Furnace Door & 2-Panel Door with Grill
Air Exchanger System for Furnace
Aluminum Heat Ducts

Perimeter Heating System with In-Floor

Cross-Overs
Main Water Line Shut-Off Valve
One Exterior Faucet
Water Shut-off Valves Where Accessible

Flooring

Shaw Take Away Carpet
Rebond Carpet Pad with Tackstrip
Carpet Installation
Shaw Vinyl Floor Coverings

Bedrooms

Ceiling Lights LED
Egress Window Each Bedroom
Wire Shelving in Wardrobes
Switched Recessed 6" LED Light
in All Walk-In Closets

Energy Efficient Standards

Low-E Vinyl Insulated Windows
R-22 Fiberglass Insulation in Floor
R-19 Fiberglass Insulation in Walls
R-31 Avg. Blown Insulation in Ceiling
**NOTE: Spacing for Framing Members may vary due to
Design Requirements

Modular Features:

2x10 Transverse Floor System
40# Roof Load
5/12 Roof Pitch with 10" Eaves
Architectural Shingles
200 Amp Electrical Services
(1) Phone Jack
No Floor Insulation

CUSTOMER CONTACT

Notes:

PRINTABLE INFO SHEET

Series: Richland ELITE Ranch

Model: GF3010-V



Standards & Features (continued)

Modular Features: (continued)

Hi-Efficiency Furnace

90 MPH Wind Zone Exp. C

Wind Wrap

2x4 Interior Walls

Additional Exterior Receptacle

Low-E Argon Windows

No Blinds or Curtains

White Moulding Package

Floorplan may be altered based on building code.

CUSTOMER CONTACT

Notes:
