

PRINTABLE INFO SHEET

Series: Astro Creations Ranch

Model: 3A2038-P



About This Model

Style: Ranch / Bedrooms: 3 / Bathrooms: 2 / Square Feet: 1920

CUSTOMER CONTACT

Notes:

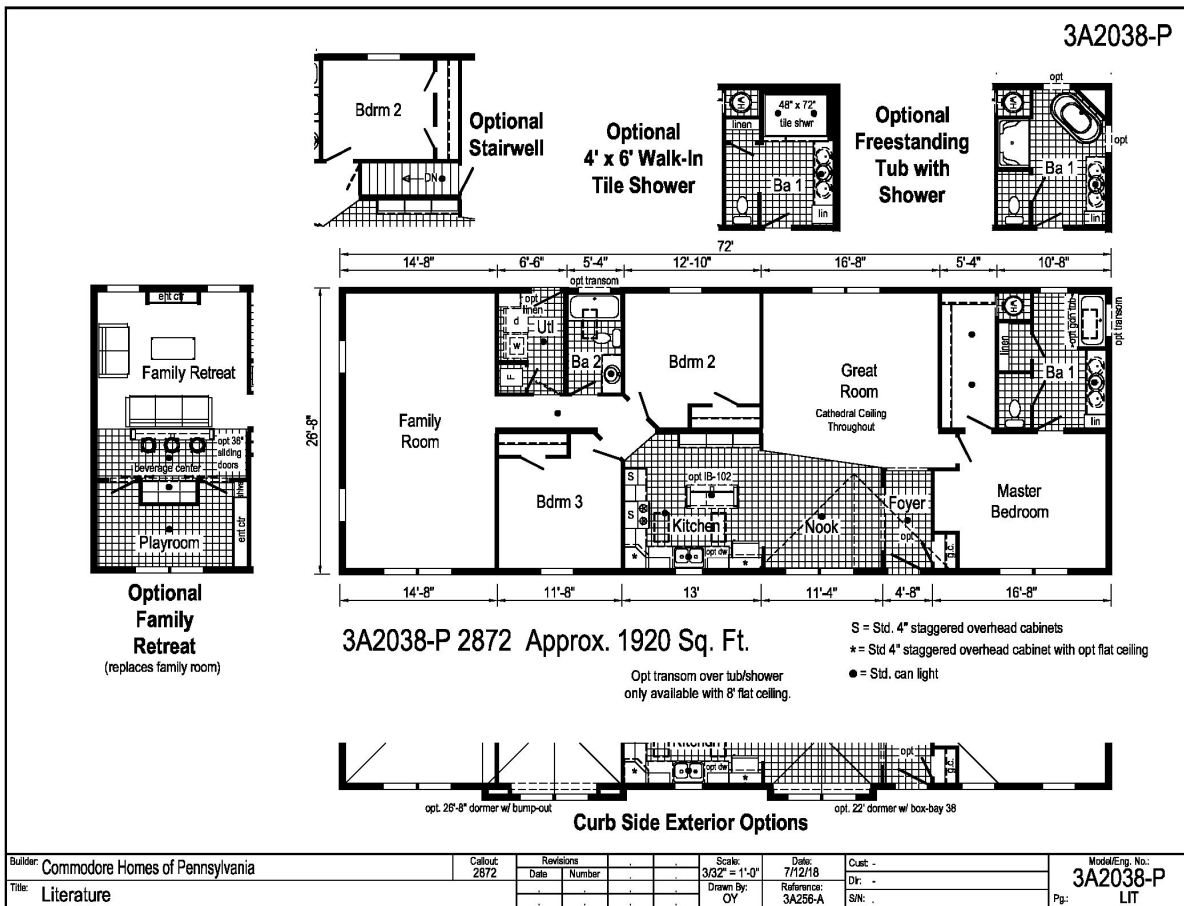
PRINTABLE INFO SHEET

Series: Astro Creations Ranch

Model: 3A2038-P



Floorplan



CUSTOMER CONTACT

Notes: _____

PRINTABLE INFO SHEET

Series: Astro Creations Ranch

Model: 3A2038-P



Standards & Features

Interior

- Flat Ceiling Throughout - Single
- Cathedral Ceiling Throughout - Ranch
- Stipple Ceiling
- 8' Sidewall Height - Single
- 7'6" Sidewall Height - Ranch
- 18 oz. Carpet Lucerne/Innovations
- Rebond Carpet Pad
- Tackstrip Carpet Installation
- No-Wax LuxFlor Vinyl Floor
- Vinyl Wall Coverings on Gypsum
- LED Flush Mount Lighting
- Pre-Hung White 6-Panel Interior
- Doors with 2 Mortised Hinges
- 30" Interior Passage Doors
- Metal Interior Passage Sets
- Floor Mount Door Stops
- Smoke Detectors with Battery Back-Up
- Wire Shelving in Closets
- Designer-Coordinated Window Treatments

Kitchen

- KCMA Certified Cabinetry
- Mission Cabinet Doors
- Concealed Cabinet Hinges
- Brushed Nickel Cabinet Hardware
- 30" Staggered Overhead Cabinets
- Cabinet Crown Moulding
- Lined Base & Overhead Cabinets
- Soft Close Undermount Drawer Guides

Kitchen (continued)

- Base and Center Shelves in Cabinets
- Laminate Countertops
- 4" Laminate Backsplash
- Stainless Steel Sink - 33x19x7
- Hi-Rise Empire Brushed Nickel Kitchen Faucet

Appliances

- 18 Cubic Foot, Black No-Frost Refrigerator
- 30" Black Deluxe Gas Range
- Power Range Hood with Light

Baths

- 60" Tub/Shower - 2 Piece
- 1.6 Gallon Per Flush Elongated Toilets
- Laminate Countertops
- 4" Laminate Backsplash
- Lighted Vent Fan in Each Bath
- Mission Cabinet Doors
- Concealed Cabinet Hinges
- Brushed Nickel Cabinet Hardware
- Base Shelf in Vanities
- 36" High Vanities
- Empire Brushed Nickel Faucets

Bedrooms

- Switched Receptacles
- Egress Window Each Bedroom
- Wire Shelving in Wardrobes
- Recessed 4" LED Light in All Walk-In Closets & Pantry

Utilities

- Plumbed & Wired for Washer

CUSTOMER CONTACT

Notes:

PRINTABLE INFO SHEET

Series: Astro Creations Ranch
Model: 3A2038-P



Standards & Features (continued)

Utilities (continued)

with Quarter Turn Valve
Vented and Wired for Dryer
100 AMP Electrical Service
Copper Wiring Throughout
30 Gallon Electric Water Heater with Pan
Gas Furnace w/ Grilled Door
Air Exchange System for Furnace
Aluminum Heat Ducts
In-Floor Cross-Over Heating System on Sectionals
Air Conditioner Thermostat w/ 5-Wires
Main Water Line Shut-Off Valve

Exterior

Black Coach Light at Front Door
Seeded Glass Light at Rear Door
GFI-Protected Exterior Receptacle
Vinyl Dutch Lap Siding
Sheathing Board Under Siding
Shingle Roof with
4" Eaves on Single Section Homes
10" Eaves on Ranch Homes
Ridgevent Roof Ventilation System
6-Panel Fiberglass Front Door 38x80
6-Panel Fiberglass Rear Door 34x80
12" Raised Panel Shutters on
Front Door Side

Construction

Transverse Floor System
2x6 - 14' & 28' Wide
2x8 - 16' & 32' Wide
2x6 Exterior Walls on 16" Centers**

Construction (continued)

20# Roof Load
3/4" OSB T&G Floor Decking
Recessed Frame Design

Energy Efficient Standards

Vinyl Insulated Low-E Windows
R-14 Fiberglass in Floor
R-19 Fiberglass in Walls
R-25 Avg. Blown in Ceiling-Single
R-28 Avg. Blown in Ceiling- Multi

****NOTE: Spacing for Framing Members may vary due to Design**

CUSTOMER CONTACT

Notes:
