

PRINTABLE INFO SHEET

Series: Astro Bungalow

Model: 3A2606-E



About This Model

Style: Ranch / Bedrooms: 2 / Bathrooms: 2 / Square Feet: 952

CUSTOMER CONTACT

Notes:

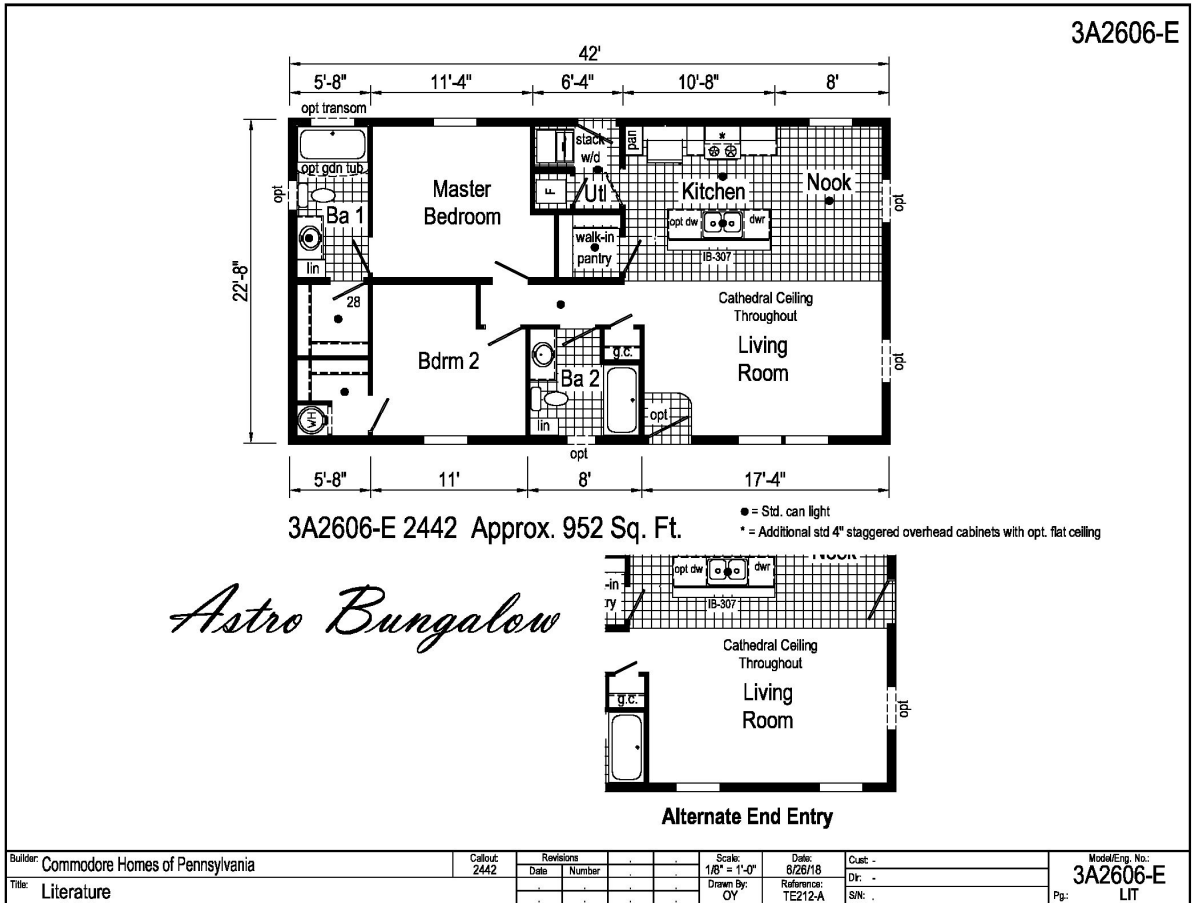
PRINTABLE INFO SHEET

Series: Astro Bungalow

Model: 3A2606-E



Floorplan



CUSTOMER CONTACT

Notes:

PRINTABLE INFO SHEET

Series: Astro Bungalow

Model: 3A2606-E



Standards & Features

Interior

- Flat Ceiling Throughout
- Stipple Ceiling
- 8' Sidewall Height
- Shaw Take Away Carpet
- Rebond Carpet Pad
- Tackstrip Carpet Installation
- Shaw Vinyl Floor
- Vinyl Wall Coverings on Gypsum
- LED Flush Mount Lighting
- Pre-Hung White 2-Panel Interior Doors with 2 Mortised Hinges
- 30" Interior Passage Doors
- Metal Interior Passage Sets
- Floor Mount Door Stops
- Smoke Detectors with Battery Back-Up
- Wire Shelving in Closets
- Designer-Coordinated Window Treatments

Kitchen

- KCMA Certified Cabinetry
- Mission Cabinet Doors
- Concealed Cabinet Hinges
- Brushed Nickel Cabinet Hardware
- 30" Staggered Overhead Cabinets
- Cabinet Crown Moulding
- Lined Base & Overhead Cabinets
- Soft Close Undermount Drawer Guides
- Base and Center Shelves in Cabinets
- Laminate Countertops

Kitchen (continued)

- 4" Laminate Backsplash
- Stainless Steel Sink - 33x22x8
- Hi-Rise Empire Brushed Nickel Kitchen Faucet

Appliances

- 18 Cubic Foot, Black No-Frost Refrigerator
- 30" Black Deluxe Gas Range
- Power Range Hood with Light

Baths

- 60" Tub/Shower - 2 Piece
- 1.6 Gallon Per Flush Elongated Toilets
- Laminate Countertops
- 4" Laminate Backsplash
- Lighted Vent Fan in Each Bath
- Mission Cabinet Doors
- Concealed Cabinet Hinges
- Brushed Nickel Cabinet Hardware
- Base Shelf in Vanities
- 36" High Vanities
- Empire Brushed Nickel Faucets

Bedrooms

- Switched Receptacles
- Egress Window Each Bedroom
- Wire Shelving in Wardrobes
- Recessed 6" LED Light in All Walk-In Closets & Pantry

Utilities

- Plumbed & Wired for Washer with Quarter Turn Valve
- Vented and Wired for Dryer

CUSTOMER CONTACT

Notes:

PRINTABLE INFO SHEET

Series: Astro Bungalow

Model: 3A2606-E



Standards & Features (continued)

Utilities (continued)

- 100 AMP Electrical Service
- Copper Wiring Throughout
- 30 Gallon Electric Water Heater with Pan
- Gas Furnace w/ Grilled Door
- Air Exchange System for Furnace
- Aluminum Heat Ducts
- In-Floor Cross-Over Heating System
- Air Conditioner Thermostat w/ 5-Wires
- Main Water Line Shut-Off Valve

Exterior

- Gatsby Light at Front Door
- Seeded Glass Jar Light at Rear Door
- GFI-Protected Exterior Receptacle
- Vinyl Dutch Lap Siding
- Sheathing Board Under Siding
- Shingle Roof with
 - 4" Eaves on Single Section Homes
 - 10" Eaves on Ranch Homes
- Ridgevent Roof Ventilation System
- 6-Panel Fiberglass Front Door 38x80
- 6-Panel Fiberglass Rear Door 34x80
- 12" Raised Panel Shutters on Front Door Side

Construction

- Transverse Floor System
- 2x6 - 14' and 24' Wide
- 2x8 - 16' Wide
- 2x6 Exterior Walls on 16" Centers**
- 20# Roof Load

Construction (continued)

- 3/4" OSB T&G Floor Decking
- Recessed Frame Design

Energy Efficient Standards

- Vinyl Insulated Low-E Windows
- R-22 Fiberglass in Floor
- R-19 Fiberglass in Walls
- R-25 Avg. Blown in Ceiling-Single
- R-28 Avg. Blown in Ceiling- Multi
- **NOTE: Spacing for Framing Members may vary due to Design Requirements

Modular Features:

- Primed / Finished Drywall Throughout
- OSB Sheathing
- Wind Wrap
- 40# Roof Load
- 5/12 Roof Pitch w/Ice Shield
- Architectural Shingles
- 90 MPH Wind Zone Exp. C
- 2x10 Floor Joist
- 2x4 Interior Walls
- Additional Exterior Receptacle
- (1) Exterior Faucet
- Non Gridded Argon Windows Low-E
- R-31 Ceiling Insulation
- Water Shut Off Where Accessible
- 200 AMP Panel Box
- Hardwood Cabinets w/Hardwood Stiles
- No Blinds or Curtains
- White Profile Moulding Package
- Brushed Nickel Metal Faucets

CUSTOMER CONTACT

Notes:

PRINTABLE INFO SHEET

Series: Astro Bungalow

Model: 3A2606-E



Standards & Features (continued)

Modular Features: (continued)

China Sinks

Perimeter Heat

Fiberglass One Piece Tub/Shower Combo(s)

(1) Phone Jack

CUSTOMER CONTACT

Notes:
