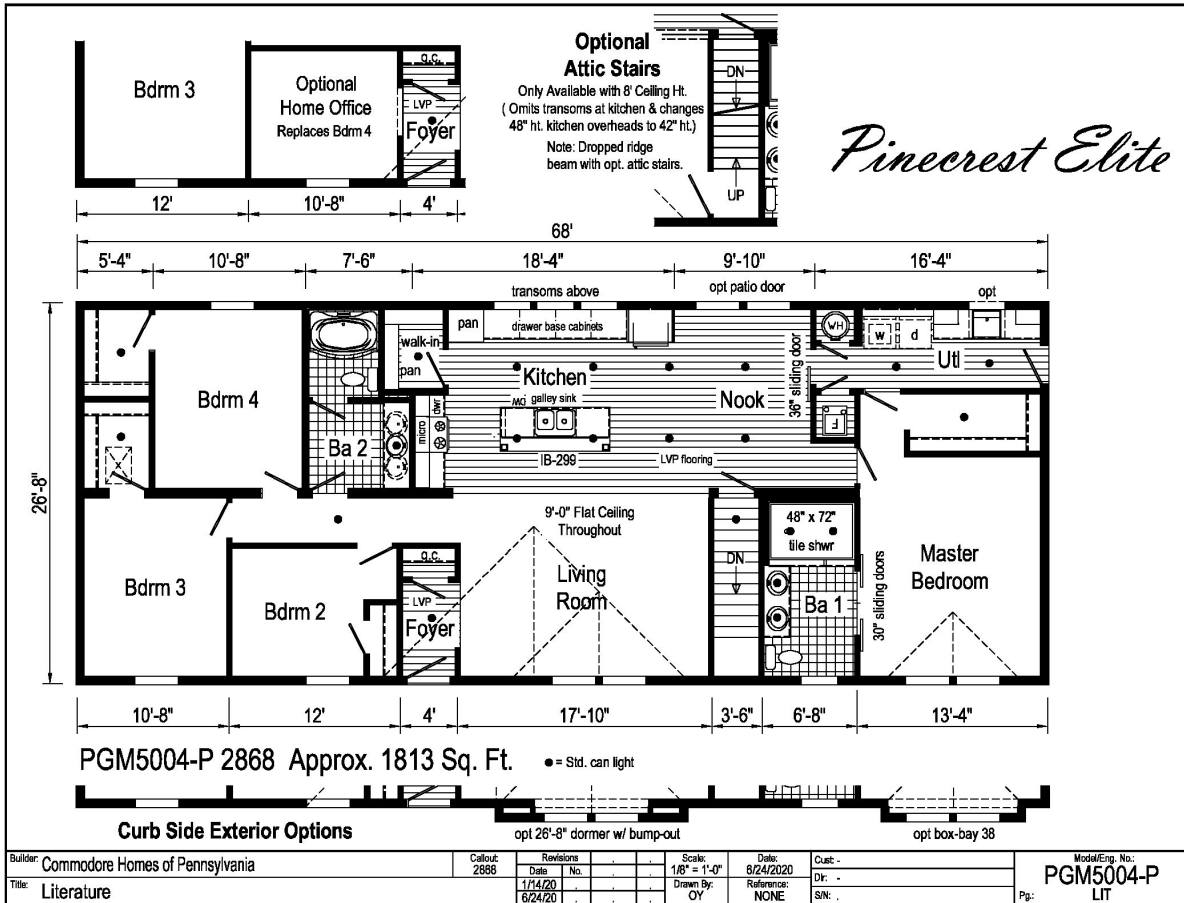


PRINTABLE INFO SHEET

Series: Pinecrest Elite Modular
 Model: PGM5004-P



About This Model

Style: Ranch / Bedrooms: 4 / Bathrooms: 2 / Square Feet: 1813

CUSTOMER CONTACT

Notes:

PRINTABLE INFO SHEET

Series: Pinecrest Elite Modular
Model: PGM5004-P



Standards & Features

Interior

- Flat Coveless Ceiling Throughout
- Smooth Ceiling
- 9' Sidewall Height
- 25 oz. Shaw Shake it Up Carpet
- Rebond Carpet Pad
- Tackstrip Carpet Installation
- Shaw Vinyl Floor
- Finished Drywall
- LED Flush Mount Lighting
- Pre-Hung White 2-Panel Interior Doors with 2 Mortised Hinges
- Sliding Barn Doors (per print)
- Metal Interior Passage Sets
- Floor Mount Door Stops
- Smoke Detectors with Battery Back-Up
- Wire Shelving in Closets
- Utility Sink
- White Moulding Package

Kitchen

- KCMA Certified Cabinetry
- Hardwood Mission Cabinet Doors with Hardwood Stiles
- Concealed Cabinet Hinges
- 48" Door over Door Overhead Cabinets with Cabinet Crown Moulding
- Hardwood Under Cabinet Moulding
- Lined Base & Overhead Cabinets
- Soft Close Undermount Drawer Guides
- Base and Center Shelves in Cabinets

Kitchen (continued)

- Laminate Countertops w/ Crescent Edge
- Apron Galley Sink w/ Brushed Nickel Metal Spring
- Pull Out Faucet
- Full Ceramic Backsplash on Range Wall
- Single Row Ceramic Backsplash on Window Wall
- Refrigerator Surround

Appliances

- Pearl Appliance Package:
- 25 CuFt French Door By Side Stainless Steel Refrigerator with Water and Ice Maker
- Self Clean Stainless Steel Free Standing Range
- Tall Tub Stainless Steel Dishwasher
- Stainless Steel Microwave above Range

Baths

- 48"x72" Ceramic Shower in Master Bath
- 1.6 Gallon Per Flush Elongated Toilets
- Framed Mirrors at Master Bath
- Square China Lav Sinks
- Laminate Countertops with Laminate Backsplash and Crescent Edge
- Lighted Vent Fan in Each Bath
- Hardwood Mission Cabinet Doors
- Concealed Cabinet Hinges
- Base Shelf in Vanities
- 36" High Vanities
- Structured Flow Brushed Nickel Faucets

Bedrooms

- Ceiling Lights (LED)
- Egress Window Each Bedroom

CUSTOMER CONTACT

Notes:

PRINTABLE INFO SHEET

Series: Pinecrest Elite Modular
Model: PGM5004-P



Standards & Features (continued)

Bedrooms (continued)

Wire Shelving in Wardrobes
Recessed 6" LED Light
in All Walk-In Closets & Pantry

Utilities

Plumbed & Wired for Washer
with Quarter Turn Valve
Vented and Wired for Dryer
200 AMP Electrical Service
Copper Wiring Throughout
30 Gallon Electric Water Heater with Pan
Hi-Efficiency Gas Furnace w/ Grilled Door
Air Exchange System for Furnace
Insulated Heat Ducts
Perimeter Heat
Air Conditioner Thermostat w/ 5-Wires
Main Water Line Shut-Off Valve
Water Shut Offs - Where Accessible

Exterior

Gatsby Light at Front & Rear Door
(2) GFI-Protected Exterior Receptacle
Vinyl Dutch Lap Siding
OSB Sheathing
Wind Wrap
5/12 Architectural Shingle Roof with
10" Eaves on Ranch Homes
Ice Shield
Ridgevent Roof Ventilation System
6-Panel Fiberglass Front Door 38x80
6-Panel Fiberglass Rear Door 34x80
12" Raised Panel Shutters on

Exterior (continued)

Front Door Side
Exterior Faucet
68" Non Gridded Argon Windows Low-E

Construction

2x10 Floor Joists
2x6 Exterior Walls on 16" Centers**
2x4 Interior Walls
40# Roof Load
3/4" OSB T and G Floor Decking

Energy Efficient Standards

Vinyl Insulated Low-E Windows Argon
R-19 Fiberglass in Walls
R-31 Avg. Blown in Ceiling- Multi
10 Year Warranty

****NOTE: Spacing for Framing Members may vary due to Design**

CUSTOMER CONTACT

Notes:
