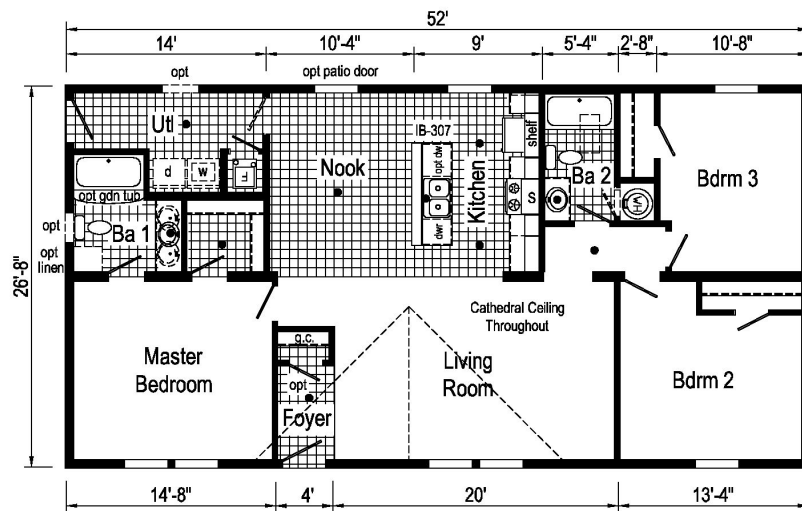


PRINTABLE INFO SHEET

Series: Blazer Select Modular

Model: TDM1014-P



TDM1014-P 2852 Approx. 1387 Sq. Ft.

● = Std. can light
S = Std. 4" staggered overhead cabinets



Blazer Select
Modular

Builder: Commodore Homes of Pennsylvania	Callout: 2852	Revisions: Date No.	Scale: 1/8" = 1'-0"	Date: 11/5/20	Client: -	Model/Eng. No.: TDM1014-P
Title: Literature			Drawn By: OY	Reference: TD1014-P	DR: -	LIT
				S/N: -		Pg.:

About This Model

Style: Ranch / Bedrooms: 3 / Bathrooms: 2 / Square Feet: 1387

CUSTOMER CONTACT

Notes:

PRINTABLE INFO SHEET

Series: Blazer Select Modular
Model: TDM1014-P



Standards & Features

Interior

Cathedral Ceiling Throughout
Stipple Ceiling
7'6" Sidewall Height
18 oz. Carpet Lucerne/Innovations
Rebond Carpet Pad
Tackstrip Carpet Installation
No-Wax Diamond Floor Vinyl Flooring
Vinyl Wall Coverings on Gypsum
Pre-Hung White 6-Panel Interior
Doors with 2 Mortised Hinges
30" Interior Passage Doors
Metal Interior Passage Sets
Floor Mount Door Stops
Smoke Detectors with Battery
Back-Up
Wire Shelving in Closets
Designer-Coordinated Window
Treatments
LED Lights Throughout (except Bedrooms)

Kitchen

KCMA Certified Cabinets
Mission Cabinet Doors
Concealed Cabinet Hinges
Brushed Nickel Cabinet Hardware
30" Staggered Overhead Cabinets
Lined Base & Overhead Cabinets
Soft Close Undermount Drawer Guides
Base Shelves in Cabinets
Laminate Countertops
4" Laminate Backsplash

Kitchen (continued)

Stainless Steel Sink - 33x19x7
Hi-Rise Empire Brushed Nickel
Kitchen Faucet

Appliances

18 Cubic Foot, Black No-Frost Refrigerator
30" Black Deluxe Electric Range
Power Range Hood with Light

Baths

60" Tub/Shower - 2 Piece
1.6 Gallon Per Flush Elongated Toilets
Laminate Countertops
4" Laminate Backsplash
Lighted Vent Fan in Each Bath
Mission Cabinet Doors
Concealed Cabinet Hinges
Brushed Nickel Cabinet Hardware
Base Shelf in Vanities
36" High Vanities
Empire Brushed Nickel Faucets

Bedrooms

Switched Receptacles
Egress Window Each Bedroom
Wire Shelving in Wardrobes
Recessed 4" LED Light
in All Walk-In Closets & Pantry

Utilities

Plumbed & Wired for Washer
with Quarter Turn Valve
Vented and Wired for Dryer
200 AMP Electrical Service

CUSTOMER CONTACT

Notes:

PRINTABLE INFO SHEET

Series: Blazer Select Modular
Model: TDM1014-P



Standards & Features (continued)

Utilities (continued)

Copper Wiring Throughout
30 Gallon Electric Water Heater with Pan
Electric Furnace w/ Grilled Door
Air Exchange System for Furnace
Aluminum Heat Ducts
In-Floor Cross-Over Heating System w/ 5-Wires
Main Water Line Shut-Off Valve

Exterior

Black Coach Light at Front Door
Seeded Glass Light at Rear Door
GFI-Protected Exterior Receptacle
Vinyl Dutch Lap Siding
Sheathing Board Under Siding
Shingle Roof with
4" Eaves on Single Section Homes
10" Eaves on Ranch Homes
Ridgevent Roof Ventilation System
6-Panel Fiberglass Front Door 38x80
6-Panel Rear Door 34x80
12" Raised Panel Shutters on
Front Door Side

Construction

Transverse Floor System
2x6 - 14' & 28' Wide
2x8 - 16' & 32' Wide
2x6 Exterior Walls on 16" Centers**
20# Roof Load
3/4" OSB T&G Floor Decking
Recessed Frame

Energy Efficient Standards

Vinyl Insulated Low-E Windows
R-14 Fiberglass in Floor
R-19 Fiberglass in Walls
R-25 Avg. Blown in Ceiling-Single
R-28 Avg. Blown in Ceiling-Multi
**NOTE: Spacing for Framing Members may vary due to Design Requirements.

Modular Features:

Floorplan may be altered based on building code.
Primed / Finished Drywall Throughout
OSB Sheathing
Wind Wrap
40# Roof Load
5/12 Roof Pitch w/Ice Shield
Architectural Shingles
90 MPH Wind Zone Exp. C
2x10 Floor Joist
2x4 Interior Walls
Additional Exterior Receptacle
(1) Exterior Faucet
Non Gridded Argon Windows Low-E
R-31 Ceiling Insulation
Water Shut Off Where Accessible
200 AMP Panel Box
Hardwood Cabinets w/Hardwood Stiles
No Blinds or Curtains
White Profile Moulding Package
Structured Flow Brushed Nickel Metal Faucets
Square China Lav Sinks
Perimeter Heat

CUSTOMER CONTACT

Notes:

PRINTABLE INFO SHEET

Series: Blazer Select Modular

Model: TDM1014-P



Standards & Features (continued)

Modular Features: (continued)

Fiberglass One Piece Tub/Shower Combo

CUSTOMER CONTACT

Notes:
