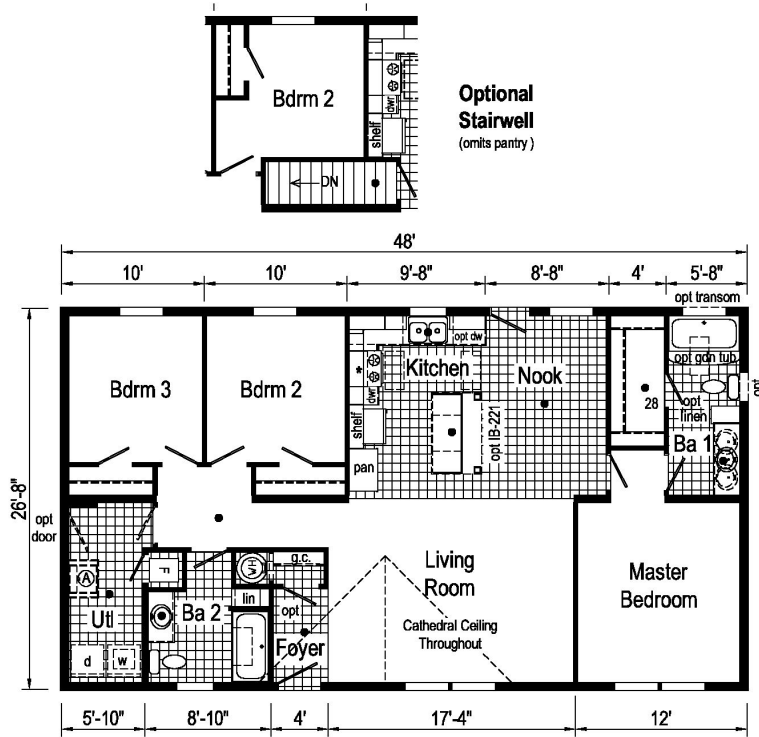


PRINTABLE INFO SHEET

Series: Blazer Select

Model: TD1013-P



TD1013-P 2848 Approx. 1280 Sq. Ft.

- = Std. can light
- Ⓐ = Std frz spc, opt utl sink or bench.
- * = Std 4" staggered overhead cabinets with opt. flat ceiling

Blazer Select

Builder: Commodore Homes of Pennsylvania	Callout: 2848	Revisions: 9/21/18	Scale: 1/8" = 1'-0"	Date: 6/19/18	Count: -	Model/Erg. No.: TD1013-P
Title: Literature		Date: 7/13/18 Number: 8/22/2018	Drawn By: OY	Reference: NONE	Dir: -	Pg: LIT

About This Model

Style: Ranch / Bedrooms: 3 / Bathrooms: 2 / Square Feet: 1280

CUSTOMER CONTACT

Notes:

PRINTABLE INFO SHEET

Series: Blazer Select

Model: TD1013-P



Standards & Features

Interior

- Cathedral Ceiling Throughout
- Stipple Ceiling
- 7' Sidewall Height
- 16 oz. Treasure Carpet
- Rebond Carpet Pad
- Tackstrip Carpet Installation
- No-Wax Diamond Floor Vinyl Flooring
- Vinyl Wall Coverings on Gypsum
- Pre-Hung White 6-Panel Interior Doors with 2 Mortised Hinges
- 30" Interior Passage Doors
- Metal Interior Passage Sets
- Floor Mount Door Stops
- Smoke Detectors with Battery Back-Up
- Wire Shelving in Closets
- Designer-Coordinated Window Treatments
- Ceiling Lights with Alabaster Glass

Kitchen

- KCMA Approved Cabinets
- Mission Cabinet Doors
- Concealed Cabinet Hinges
- Brushed Nickel Cabinet Hardware
- 30" Overhead Cabinets
- Lined Base & Overhead Cabinets
- Soft Close Undermount Drawer Guides
- Base Shelves in Cabinets
- Laminate Countertops
- Stainless Steel Sink - 33x19x7

Kitchen (continued)

- Hi-Rise Empire Brushed Nickel Kitchen Faucet

Appliances

- 30" Deluxe Electric Range
- Power Range Hood with Light
- 18 Cubic Foot, No-Frost Refrigerator

Baths

- 60" Tub/Shower - 2 Piece
- 1.6 Gallon Per Flush Toilets
- China Stool, Tank and Lid
- Laminate Countertops
- Lighted Vent Fan in Each Bath
- Mission Cabinet Doors
- Concealed Cabinet Hinges
- Brushed Nickel Cabinet Hardware
- Base Shelf in Vanities
- 36" High Vanities
- Empire Brushed Nickel Faucets

Bedrooms

- Switched Receptacles
- Egress Window Each Bedroom
- Wire Shelving in Wardrobes
- Recessed 4" LED Light in All Walk-In Closets & Pantry

Utilities

- Plumbed & Wired for Washer with Quarter Turn Valve
- Vented and Wired for Dryer
- 200 AMP Electrical Service
- Copper Wiring Throughout

CUSTOMER CONTACT

Notes:

PRINTABLE INFO SHEET

Series: Blazer Select
Model: TD1013-P



Standards & Features (continued)

Utilities (continued)

30 Gallon Electric Water Heater with Pan
Electric Furnace w/ Grilled Door
Air Exchange System for Furnace
Aluminum Heat Ducts
In-Floor Cross-Over Heating System
Air Conditioner Ready Thermostat w/ 5-Wires
Main Water Line Shut-Off Valve

Exterior

Brushed Nickel Lantern at Front Door
White Glass Jar Light at Rear Door
GFI-Protected Exterior Receptacle
Vinyl Dutch Lap Siding
Sheathing Board Under Siding
Shingle Roof with
" Eaves on Single Section Homes
10" Eaves on Ranch Homes
Ridgevent Roof Ventilation System
6-Panel Fiberglass Front Door 38x76
9-Lite Rear Door 32x76 Outswing
12" Raised Panel Shutters on Front Door Side

Construction

Transverse Floor System
2x6 - 14' & 28' Wide
2x8 - 16' & 32' Wide
2x6 Exterior Walls on 16" Centers**
20# Roof Load
3/4" OSB T&G Floor Decking

Construction (continued)

Recessed Frame

Energy Efficient Standards

Vinyl Insulated Low-E Windows
R-14 Fiberglass in Floor
R-19 Fiberglass in Walls
R-25 Avg Blown in Ceiling-Single
R-28 Avg. Blown in Ceiling- Multi

CUSTOMER CONTACT

Notes:
