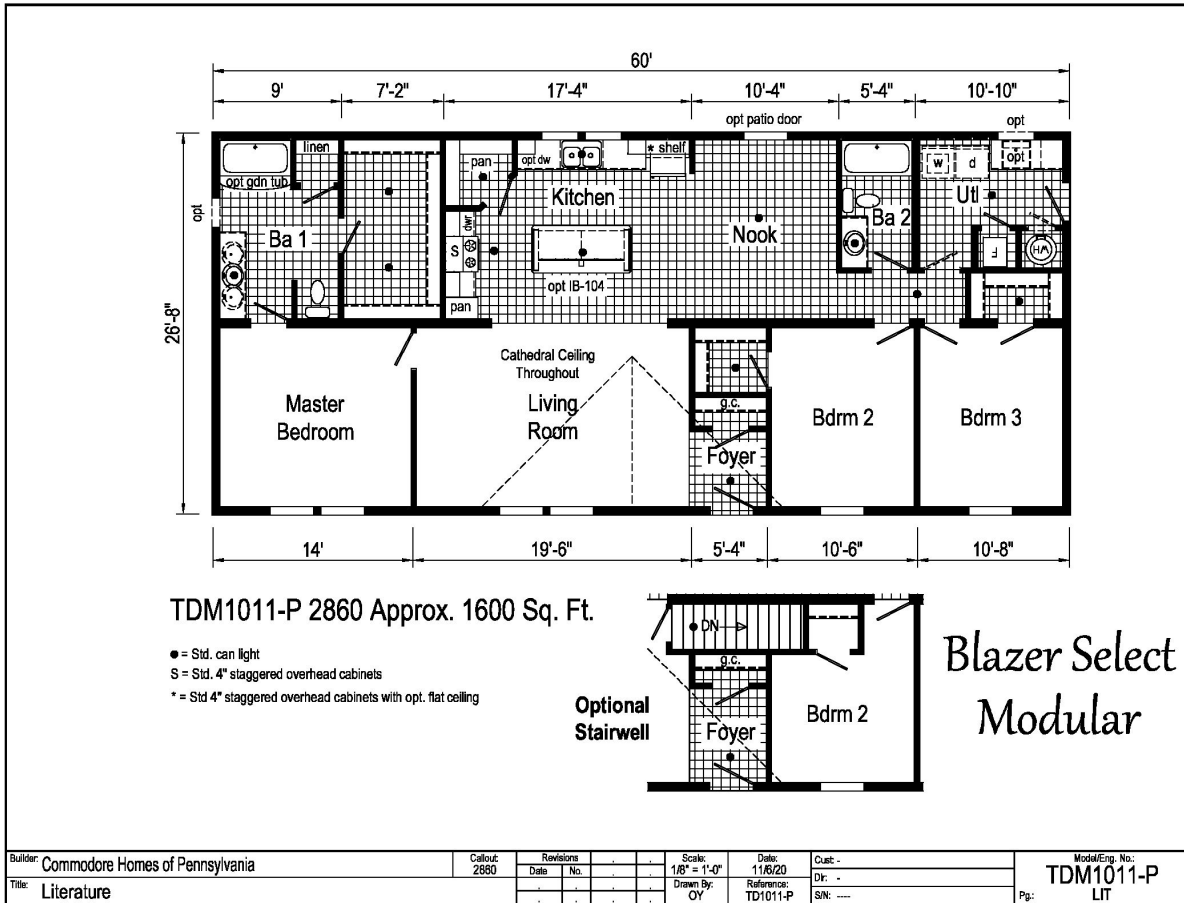


PRINTABLE INFO SHEET

Series: Blazer Select Modular
 Model: TDM1011-P



About This Model

Style: Ranch / Bedrooms: 3 / Bathrooms: 2 / Square Feet: 1600

CUSTOMER CONTACT

Notes:

PRINTABLE INFO SHEET

Series: Blazer Select Modular
Model: TDM1011-P



Standards & Features

Interior

Cathedral Ceiling Throughout
Stipple Ceiling
7'6" Sidewall Height
18 oz. Carpet Lucerne/Innovations
Rebond Carpet Pad
Tackstrip Carpet Installation
No-Wax Diamond Floor Vinyl Flooring
Vinyl Wall Coverings on Gypsum
Pre-Hung White 6-Panel Interior
Doors with 2 Mortised Hinges
30" Interior Passage Doors
Metal Interior Passage Sets
Floor Mount Door Stops
Smoke Detectors with Battery
Back-Up
Wire Shelving in Closets
Designer-Coordinated Window
Treatments
LED Lights Throughout (except Bedrooms)

Kitchen

KCMA Certified Cabinets
Mission Cabinet Doors
Concealed Cabinet Hinges
Brushed Nickel Cabinet Hardware
30" Staggered Overhead Cabinets
Lined Base & Overhead Cabinets
Soft Close Undermount Drawer Guides
Base Shelves in Cabinets
Laminate Countertops
4" Laminate Backsplash

Kitchen (continued)

Stainless Steel Sink - 33x19x7
Hi-Rise Empire Brushed Nickel
Kitchen Faucet

Appliances

18 Cubic Foot, Black No-Frost Refrigerator
30" Black Deluxe Electric Range
Power Range Hood with Light

Baths

60" Tub/Shower - 2 Piece
1.6 Gallon Per Flush Elongated Toilets
Laminate Countertops
4" Laminate Backsplash
Lighted Vent Fan in Each Bath
Mission Cabinet Doors
Concealed Cabinet Hinges
Brushed Nickel Cabinet Hardware
Base Shelf in Vanities
36" High Vanities
Empire Brushed Nickel Faucets

Bedrooms

Switched Receptacles
Egress Window Each Bedroom
Wire Shelving in Wardrobes
Recessed 4" LED Light
in All Walk-In Closets & Pantry

Utilities

Plumbed & Wired for Washer
with Quarter Turn Valve
Vented and Wired for Dryer
200 AMP Electrical Service

CUSTOMER CONTACT

Notes:

PRINTABLE INFO SHEET

Series: Blazer Select Modular
Model: TDM1011-P



Standards & Features (continued)

Utilities (continued)

- Copper Wiring Throughout
- 30 Gallon Electric Water Heater with Pan
- Electric Furnace w/ Grilled Door
- Air Exchange System for Furnace
- Aluminum Heat Ducts
- In-Floor Cross-Over Heating System w/ 5-Wires
- Main Water Line Shut-Off Valve

Exterior

- Black Coach Light at Front Door
- Seeded Glass Light at Rear Door
- GFI-Protected Exterior Receptacle
- Vinyl Dutch Lap Siding
- Sheathing Board Under Siding
- Shingle Roof with
- 4" Eaves on Single Section Homes
- 10" Eaves on Ranch Homes
- Ridgevent Roof Ventilation System
- 6-Panel Fiberglass Front Door 38x80
- 6-Panel Rear Door 34x80
- 12" Raised Panel Shutters on Front Door Side

Construction

- Transverse Floor System
- 2x6 - 14' & 28' Wide
- 2x8 - 16' & 32' Wide
- 2x6 Exterior Walls on 16" Centers**
- 20# Roof Load
- 3/4" OSB T&G Floor Decking
- Recessed Frame

Energy Efficient Standards

- Vinyl Insulated Low-E Windows
- R-14 Fiberglass in Floor
- R-19 Fiberglass in Walls
- R-25 Avg. Blown in Ceiling-Single
- R-28 Avg. Blown in Ceiling-Multi
- **NOTE: Spacing for Framing Members may vary due to Design Requirements.

Modular Features:

- Floorplan may be altered based on building code.
- Primed / Finished Drywall Throughout
- OSB Sheathing
- Wind Wrap
- 40# Roof Load
- 5/12 Roof Pitch w/Ice Shield
- Architectural Shingles
- 90 MPH Wind Zone Exp. C
- 2x10 Floor Joist
- 2x4 Interior Walls
- Additional Exterior Receptacle
- (1) Exterior Faucet
- Non Gridded Argon Windows Low-E
- R-31 Ceiling Insulation
- Water Shut Off Where Accessible
- 200 AMP Panel Box
- Hardwood Cabinets w/Hardwood Stiles
- No Blinds or Curtains
- White Profile Moulding Package
- Structured Flow Brushed Nickel Metal Faucets
- Square China Lav Sinks
- Perimeter Heat

CUSTOMER CONTACT

Notes:

PRINTABLE INFO SHEET

Series: Blazer Select Modular

Model: TDM1011-P



Standards & Features (continued)

Modular Features: (continued)

Fiberglass One Piece Tub/Shower Combo

CUSTOMER CONTACT

Notes:
