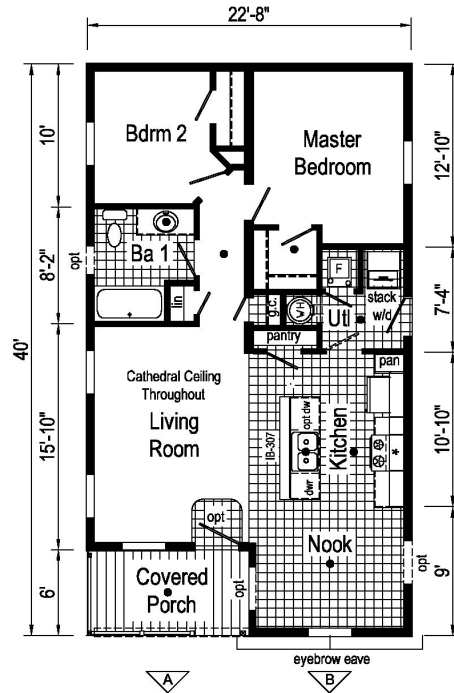


# PRINTABLE INFO SHEET

Series: Astro Bungalow

Model: 3AM2609-E



*Astro Bungalow  
Modular*

3AM2609-E 2440 Approx. 839 Sq. Ft.

- = Std. can light
- \* = Std 4" staggered overhead cabinets with opt. flat ceiling
- △ = Hitch end of home and box label

|  |               |                     |                     |                     |           |                           |
|--|---------------|---------------------|---------------------|---------------------|-----------|---------------------------|
| Builder: Commodore Homes of Pennsylvania | Callout: 2440 | Revisions: Date No. | Scale: 1/8" = 1'-0" | Date: 11/11/20      | Client: - | Model/Eng. No.: 3AM2609-E |
| Title: Literature                        |               |                     | Drawn By: OY        | Reference: 3A2609-E | DR: -     | Pg: LIT                   |
|  |               |                     |                     |                     | S/N: ---  |                           |

## About This Model

Style: Ranch / Bedrooms: 2 / Bathrooms: 1 / Square Feet: 839

## CUSTOMER CONTACT

Notes:

---



---



---



---

# PRINTABLE INFO SHEET

**Series: Astro Bungalow**

**Model: 3AM2609-E**



## Standards & Features

### Interior

- Flat Ceiling Throughout
- Stipple Ceiling
- 8' Sidewall Height
- Shaw Take Away Carpet
- Rebond Carpet Pad
- Tackstrip Carpet Installation
- Shaw Vinyl Floor
- Vinyl Wall Coverings on Gypsum
- LED Flush Mount Lighting
- Pre-Hung White 2-Panel Interior Doors with 2 Mortised Hinges
- 30" Interior Passage Doors
- Metal Interior Passage Sets
- Floor Mount Door Stops
- Smoke Detectors with Battery Back-Up
- Wire Shelving in Closets
- Designer-Coordinated Window Treatments

### Kitchen

- KCMA Certified Cabinetry
- Mission Cabinet Doors
- Concealed Cabinet Hinges
- Brushed Nickel Cabinet Hardware
- 30" Staggered Overhead Cabinets
- Cabinet Crown Moulding
- Lined Base & Overhead Cabinets
- Soft Close Undermount Drawer Guides
- Base and Center Shelves in Cabinets
- Laminate Countertops

### Kitchen (continued)

- 4" Laminate Backsplash
- Stainless Steel Sink - 33x22x8
- Hi-Rise Empire Brushed Nickel Kitchen Faucet

### Appliances

- 18 Cubic Foot, Black No-Frost Refrigerator
- 30" Black Deluxe Gas Range
- Power Range Hood with Light

### Baths

- 60" Tub/Shower - 2 Piece
- 1.6 Gallon Per Flush Elongated Toilets
- Laminate Countertops
- 4" Laminate Backsplash
- Lighted Vent Fan in Each Bath
- Mission Cabinet Doors
- Concealed Cabinet Hinges
- Brushed Nickel Cabinet Hardware
- Base Shelf in Vanities
- 36" High Vanities
- Empire Brushed Nickel Faucets

### Bedrooms

- Switched Receptacles
- Egress Window Each Bedroom
- Wire Shelving in Wardrobes
- Recessed 6" LED Light in All Walk-In Closets & Pantry

### Utilities

- Plumbed & Wired for Washer with Quarter Turn Valve
- Vented and Wired for Dryer

## CUSTOMER CONTACT

Notes:

---

---

---

---

# PRINTABLE INFO SHEET

**Series: Astro Bungalow**  
**Model: 3AM2609-E**



## Standards & Features (continued)

### Utilities (continued)

100 AMP Electrical Service  
Copper Wiring Throughout  
30 Gallon Electric Water Heater with Pan  
Gas Furnace w/ Grilled Door  
Air Exchange System for Furnace  
Aluminum Heat Ducts  
In-Floor Cross-Over Heating System  
Air Conditioner Thermostat w/ 5-Wires  
Main Water Line Shut-Off Valve

### Exterior

Gatsby Light at Front Door  
Seeded Glass Jar Light at Rear Door  
GFI-Protected Exterior Receptacle  
Vinyl Dutch Lap Siding  
Sheathing Board Under Siding  
Shingle Roof with  
4" Eaves on Single Section Homes  
10" Eaves on Ranch Homes  
Ridgevent Roof Ventilation System  
6-Panel Fiberglass Front Door 38x80  
6-Panel Fiberglass Rear Door 34x80  
12" Raised Panel Shutters on Front Door Side

### Construction

Transverse Floor System  
2x6 - 14' and 24' Wide  
2x8 - 16' Wide  
2x6 Exterior Walls on 16" Centers\*\*  
20# Roof Load

### Construction (continued)

3/4" OSB T&G Floor Decking  
Recessed Frame Design

### Energy Efficient Standards

Vinyl Insulated Low-E Windows  
R-22 Fiberglass in Floor  
R-19 Fiberglass in Walls  
R-25 Avg. Blown in Ceiling-Single  
R-28 Avg. Blown in Ceiling- Multi  
\*\*NOTE: Spacing for Framing Members may vary due to Design Requirements

### Modular Features:

Primed / Finished Drywall Throughout  
OSB Sheathing  
Wind Wrap  
40# Roof Load  
5/12 Roof Pitch w/Ice Shield  
Architectural Shingles  
90 MPH Wind Zone Exp. C  
2x10 Floor Joist  
2x4 Interior Walls  
Additional Exterior Receptacle  
(1) Exterior Faucet  
Non Gridded Argon Windows Low-E  
R-31 Ceiling Insulation  
Water Shut Off Where Accessible  
200 AMP Panel Box  
Hardwood Cabinets w/Hardwood Stiles  
No Blinds or Curtains  
White Profile Moulding Package  
Brushed Nickel Metal Faucets

## CUSTOMER CONTACT

Notes:

---

---

---

---

## **PRINTABLE INFO SHEET**

**Series: Astro Bungalow**

**Model: 3AM2609-E**



## **Standards & Features (continued)**

### **Modular Features: (continued)**

China Sinks

Perimeter Heat

Fiberglass One Piece Tub/Shower Combo(s)

(1) Phone Jack

## **CUSTOMER CONTACT**

Notes:

---

---

---

---