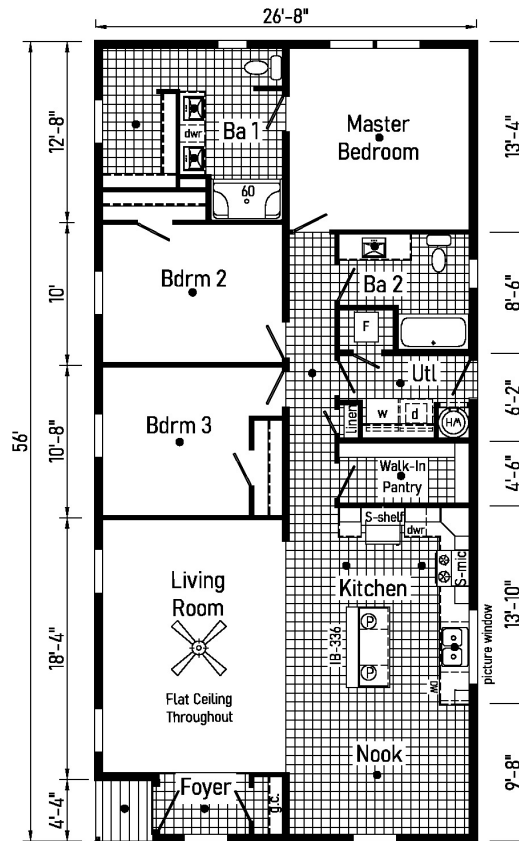


PRINTABLE INFO SHEET

Series: Blazer Elite

Model: TD1301-P Blazer Elite



About This Model

Style: Ranch / Bedrooms: 3 / Bathrooms: 2 / Square Feet: 2856

CUSTOMER CONTACT

Notes:

PRINTABLE INFO SHEET

Series: Blazer Elite

Model: TD1301-P Blazer Elite



Standards & Features

Interior

- Flat Ceiling Throughout
- Stipple Ceiling
- 8' Sidewall Height
- Take Away Carpet
- Rebond Carpet Pad
- Tackstrip Carpet Installation
- Shaw Vinyl Flooring
- Vinyl Flooring Entry Foyer
- Vinyl Wall Coverings on Gypsum
- Pre-Hung White 2-Panel Interior
- Doors with 2 Mortised Hinges
- 30" Interior Passage Doors
- Metal Interior Passage Sets
- Floor Mount Door Stops
- Smoke Detectors with Battery Back-Up
- Wire Shelving in Closets & Above W/D
- Designer-Coordinated Window Treatments
- LED Lights Throughout
- Ceiling Fan in Living Room

Kitchen

- KCMA Certified Cabinets
- Mission Cabinet Doors
- Concealed Cabinet Hinges
- Brushed Nickel Cabinet Hardware
- 30" Staggered Overhead Cabinets
- Lined Base & Overhead Cabinets
- Kitchen Island
- Soft Close Undermount Drawer Guides

Kitchen (continued)

- Base Shelves in Cabinets
- Laminate Countertops
- 4" Laminate Backsplash
- Stainless Steel Sink - 33x22x8
- Hi-Rise Structured Flow Brushed Nickel Kitchen Faucet
- (2) Pendant Lights over Island

Appliances

- 20 CuFt, Stainless Steel Refrigerator w/Top Freezer
- 30" Stainless Steel Deluxe Electric Range
- Stainless Steel Dishwasher 4 Cycle
- Stainless Steel Over the Range Microwave

Baths

- 60" Fiberglass Shower - Master Bath
- 60" One Piece Fiberglass Tub/Shower - Bath 2
- 1.6 Gallon Per Flush Elongated Toilets
- Laminate Countertops
- 4" Laminate Backsplash
- Lighted Vent Fan in Each Bath
- Mission Cabinet Doors
- Concealed Cabinet Hinges
- Brushed Nickel Cabinet Hardware
- Base Shelf in Vanities
- 36" High Vanities
- Square China Lavs
- Double Lav Sinks - Master Bath
- Structured Flow Brushed Nickel Faucets

Bedrooms

- LED Lights

CUSTOMER CONTACT

Notes:

PRINTABLE INFO SHEET

Series: Blazer Elite

Model: TD1301-P Blazer Elite



Standards & Features (continued)

Bedrooms (continued)

Egress Window Each Bedroom
Wire Shelving in Wardrobes
Recessed 6" LED Light
in All Walk-In Closets & Pantry

Utilities

Plumbed & Wired for Washer
with Quarter Turn Valve
Vented and Wired for Dryer
200 AMP Electrical Service
Copper Wiring Throughout
30 Gallon Electric Water Heater
with Pan
Water Shut Off Throughout
Main Water Shut off in Utility
Electric Furnace w/ Grilled Door
Air Exchange System for Furnace
Aluminum Heat Ducts
In-Floor Cross-Over Heating System
Air Conditioner Ready Thermostat
w/ 5-Wires

Exterior

Gatsby Light at Front Door
Seeded Glass Light at Rear Door
GFI-Protected Exterior Receptacle
(1) Exterior Water Faucet
Vinyl Dutch Lap Siding
Sheathing Board Under Siding
Shingle Roof with
4" Eaves on Single Section Homes
10" Eaves on Ranch Homes

Exterior (continued)

Ridgevent Roof Ventilation System
6-Panel Fiberglass Front Door 38x80
1-Lite Rear Door 34x80
12" Raised Panel Shutters on
Front Door Side

Construction

Transverse Floor System
2x6 - 14' & 28' Wide
2x8 - 16' & 32' Wide
2x6 Exterior Walls on 16" Centers**
20# Roof Load
3/4" OSB T and G Floor Decking
Recessed Frame
2 Adjustable Outriggers

Energy Efficient Standards

Vinyl Insulated Low-E Windows
R-22 Fiberglass in Floor
R-19 Fiberglass in Walls
R-25 Avg. Blown in Ceiling-Single
R-28 Avg. Blown in Ceiling-Multi

CUSTOMER CONTACT

Notes:
