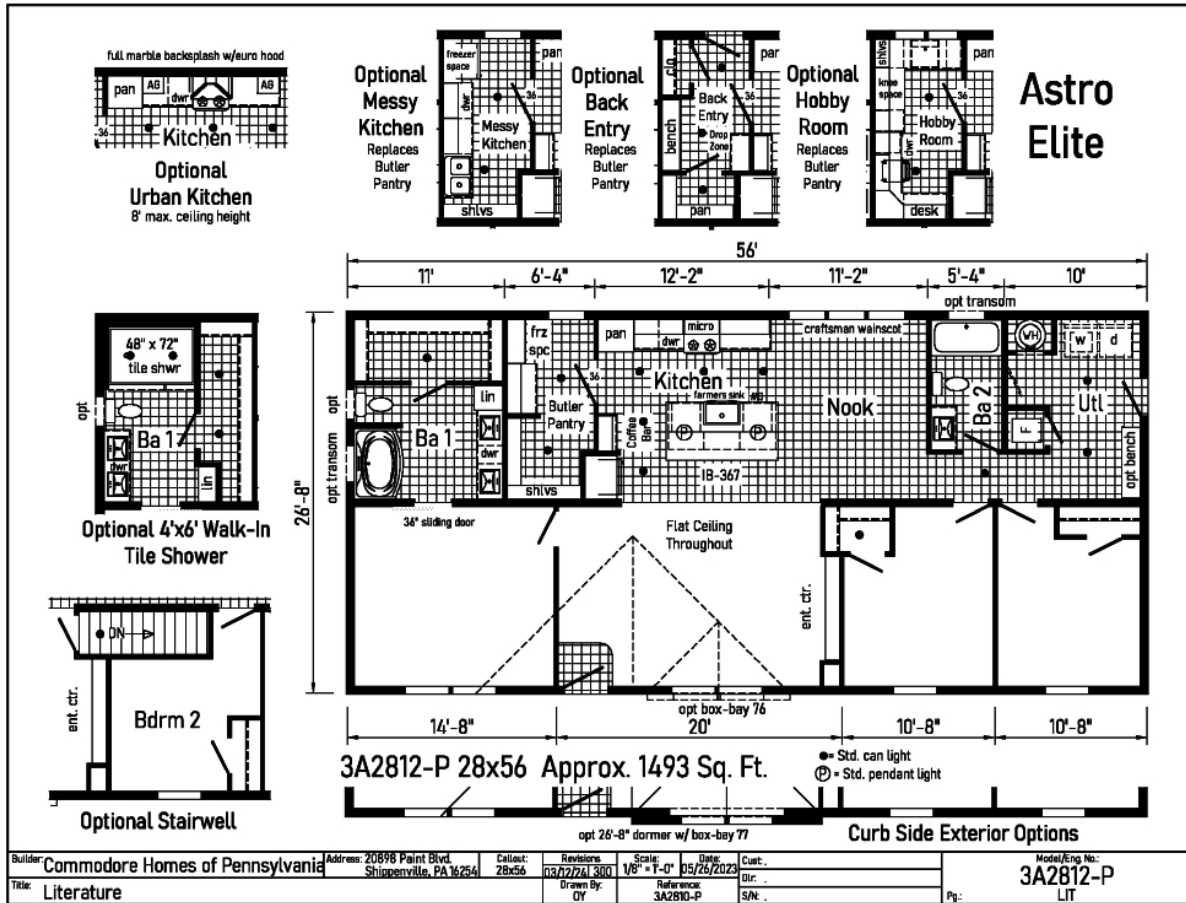


PRINTABLE INFO SHEET

Series: Astro Elite

Model: 3A2812-P



About This Model

Style: Ranch / Bedrooms: 3 / Bathrooms: 2 / Square Feet: 1493

CUSTOMER CONTACT

Notes:

PRINTABLE INFO SHEET

Series: Astro Elite
Model: 3A2812-P



Standards & Features

Interior

Stipple Ceiling

8' Sidewall Height

Take Away Carpet

Rebond Carpet Pad

Tackstrip Carpet Installation

Shaw Vinyl Floor

Foyer w/ Vinyl Flooring

Vinyl Wall Coverings on Gypsum

LED Flush Mount Lighting

Nook Light

Pre-Hung White 2-Panel Interior

Doors with 2 Mortised Hinges

30" Interior Passage Doors

Metal Interior Passage Sets

Floor Mount Door Stops

Smoke Detectors with Battery Back-Up

Wire Shelving in Closets

Designer-Coordinated Window Treatments

Shiplap Wainscot Accent in Nook

Interior Sliding Barn Door - per model

Profile Moulding Package

Kitchen

KCMA Certified Cabinetry

Mission Cabinet Doors

Concealed Cabinet Hinges

Brushed Nickel Cabinet Hardware

Cabinet Crown Moulding

Lined Base & Overhead Cabinets

Soft Close Undermount Drawer Guides

Base and Center Shelves in Cabinets

Kitchen (continued)

Laminate Countertops

Soft Close Cabinet Doors

Stainless Steel Galley Sink Rounded Front

Hi-Rise Brushed Nickel Metal

Kitchen Faucet by Structured Flow

Island with Pendant Lighting

Full Ceramic Backsplash - Range Wall

Single Row Ceramic Backsplash Window Wall

Under Cabinet Moulding

Cubbies over Overhead Cabinets

Appliances

Stainless Steel Opal Appliance Bundle

20CF Refrigerator Top/Bottom, Deluxe Range, &

4-Cycle Tall Tub Dishwasher

Stainless Steel Microwave Over the Range

Baths

Fiberglass Garden Tub/Shower in Master Bath

60" Tub/Shower 2 Piece in Bath 2

1.6 Gallon Per Flush Elongated Toilets

Laminate Countertops

4" Laminate Backsplash

Lighted Vent Fan in Each Bath

Mission Cabinet Doors

Concealed Cabinet Hinges

Base Shelf in Vanities

36" High Vanities

Double Lav Sinks in Master Bath

Wall Mount Lights over Mirrors

Square China Lav Sinks

Empire Brushed Nickel Faucets

CUSTOMER CONTACT

Notes:

PRINTABLE INFO SHEET

Series: Astro Elite

Model: 3A2812-P



Standards & Features (continued)

Bedrooms

- Switched Receptacles
- Egress Window Each Bedroom
- Wire Shelving in Wardrobes
- Recessed 6" LED Light in All Walk-In Closets & Pantry

Utilities

- Plumbed & Wired for Washer with Quarter Turn Valve
- Vented and Wired for Dryer
- 100 AMP Electrical Service
- Copper Wiring Throughout
- 30 Gallon Electric Water Heater with Pan
- Gas Furnace w/ Grilled Door
- Air Exchange System for Furnace
- Aluminum Heat Ducts
- In-Floor Cross-Over Heating System
- Air Conditioner Thermostat w/ 5-Wires
- Main Water Line Shut-Off Valve

Exterior

- Gatsby Light at Front Door
- Seeded Glass Light at Rear Door
- GFI-Protected Exterior Receptacle
- Vinyl Dutch Lap Siding
- Sheathing Board Under Siding
- Shingle Roof with 4" Eaves on Single Section Homes
- 10" Eaves on Ranch Homes
- Ridgevent Roof Ventilation System
- 6-Panel Fiberglass Front Door 38x80
- 6-Panel Fiberglass Rear Door 34x80

Exterior (continued)

- 12" Raised Panel Shutters on Front Door Side

Construction

- Transverse Floor System
- 2x6 - 14' & 28' Wide
- 2x8 - 16' & 32' Wide
- 2x6 Exterior Walls on 16" Centers**
- 20# Roof Load
- 3/4" OSB T and G Floor Decking
- Recessed Frame Design

Energy Efficient Standards

- Vinyl Insulated Low-E Windows
- R-22 Fiberglass in Floor
- R-19 Fiberglass in Walls
- R-25 Avg. Blown in Ceiling-Single
- R-28 Avg. Blown in Ceiling- Multi

****NOTE: Spacing for Framing Members may vary due to Design**

Modular Features:

- Primed / Finished Drywall Throughout
- OSB Sheathing
- Wind Wrap
- 40# Roof Load
- 5/12 Roof Pitch
- Architectural Shingles
- 90 MPH Wind Zone Exp. C
- 2x10 Floor Joist
- 2x4 Interior Walls
- Additional Exterior Receptacle
- (1) Exterior Faucet
- Non Gridded Argon Windows Low-E

CUSTOMER CONTACT

Notes:

PRINTABLE INFO SHEET

Series: Astro Elite

Model: 3A2812-P



Standards & Features (continued)

Modular Features: (continued)

R-31 Ceiling Insulation

Water Shut Off Where Accessible

200 AMP Panel Box

(1) Phone Jack

Hi-Efficiency Furnace

No Blinds or Curtains

White Profile Moulding Package

Hardwood Cabinets & Hardwood Stiles

Structured Flow Brushed Nickel Metal Faucets

Square China Lav Sinks

Perimeter Heat

Insulated Heat Duct

Fiberglass One Piece Tub/Shower Combo

Floorplan may be altered based on building code.

CUSTOMER CONTACT

Notes:
