

## PRINTABLE INFO SHEET

Series: Richland ELITE Ranch

Model: GF3013-P



## About This Model

Style: Ranch / Bedrooms: 3 / Bathrooms: 2 / Square Feet: 1758

## CUSTOMER CONTACT

Notes:

---

---

---

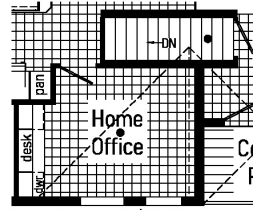
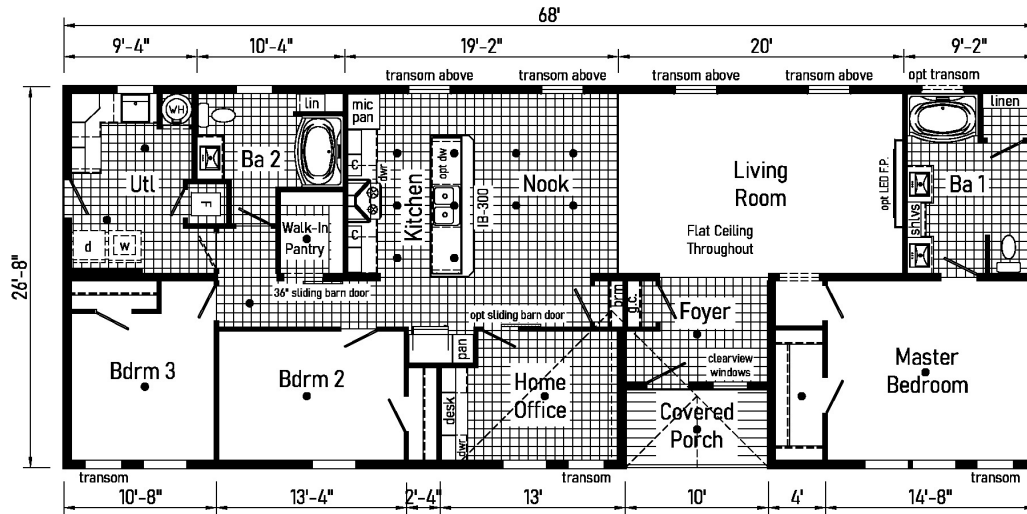
---

# PRINTABLE INFO SHEET

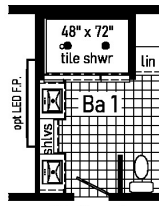
Series: Richland ELITE Ranch  
 Model: GF3013-P



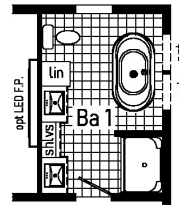
## Floorplan



**Optional Stairwell**



**Optional 4'x6' Walk-In Tile Shower**



**Optional Freestanding Tub with Shower**

## CUSTOMER CONTACT

Notes:

---



---



---



---

# PRINTABLE INFO SHEET

**Series: Richland ELITE Ranch**  
**Model: GF3013-P**



## Standards & Features

### Interior

8' Flat Stipple Ceilings

### Profile Moulding Package

Ceiling Cove

### Primed Finished Drywall Throughout

LED Lighting

Pre-Hung Door Jambs

Mortise Hinges

30" 2-Panel White Passage Doors

Metal Interior Passage Sets

Floor Mount Door Stops

Smoke Detectors with Battery Back-Up

Wire Shelving in Guest Closet

Designer-Coordinated Window Treatments

### Picture Window over Kitchen Sink

2 Clearview Windows in Nook - per model

### Exterior

Gatsby Light at Front and Rear Door

GFI-Protected Exterior Receptacle

Vinyl Dutch Lap Siding

OSB Sheathing Under Siding

w/ Windwrap

Shingle Roof with 10" Eaves

Ridgevent Roof Ventilation System

38x80 6-Panel Fiberglass Front Door with

Deadbolt Lock

6-Panel Fiberglass Rear Door 34x80

12" Raised Panel Shutters on Front Door

Side

### Construction

Transverse Floor System:

### Construction (continued)

2x6 on 24 and 28 Wide Models

2x8 on 32 Wide Models

\*\*2x6 Exterior Walls on 16" Centers

20# Roof Load

Recessed Frame Design

### Kitchen

18 CF, Black Frost Free Refrigerator

30" Black Gas Range

Stainless 30" Range Hood

Stainless Steel Sink - 33x22x8

### Structured Flow Hi-Rise Brushed Nickel Faucet

Beverage Center w/Barn Style Sliding

Doors, Wine Rack, & Open Shelving

Butler Pantry w/Storage Shelves & Small

Appliance Center (Most Models)

42" Overhead Cabinets

Soft Close Cabinet Doors

4" Ceramic Backsplash on Sink Wall

Full Ceramic Backsplash Range Area

LED Lighting

### Baths

### 60" One Piece Fiberglass Garden

Tub/Shower

Deluxe Shower Drape at 60" Tubs

1.6 Gallon Per Flush Elongated Toilets

Square China Lav Sinks

Lighted Vent Fan in Each Bath

### Brushed Nickel Metal Faucets -Structured Flow

Vanity Light in Master Bath

## CUSTOMER CONTACT

Notes:

---

---

---

---

# PRINTABLE INFO SHEET

**Series: Richland ELITE Ranch**  
**Model: GF3013-P**



## Standards & Features (continued)

### 4" Ceramic Backsplash in Baths Cabinetry

Classic Craft Custom Cabinetry  
(KCMA Certified)

### Hardwood Mission Cabinet Doors

Hardwood Stiles  
Hardwood Cabinet Crown Moulding  
Hardwood Under Cabinet Moulding  
Drawer Over Door Base Cabinets  
Soft Close Cabinet Doors</strong>  
Concealed Cabinet Hinges  
Adjustable Shelves in Overhead Cabinets  
Undermount Soft-Close Drawer Guides  
Adjustable Center Shelf in Base Cabinets  
Laminate Countertops with Crescent Edge  
Base Shelf in Vanities  
36" High Vanities

### Utilities

Washer and Dryer Area  
-Plumb and Wire for Washer Including  
Quarter Turn Valve  
-Wire and Vent for Dryer  
100 AMP Electrical Service  
Copper Wiring Throughout  
40 Gallon Electric Water Heater  
with Pan  
Programmable Thermostat Wi-Fi  
Gas Furnace  
Furnace Door &ndash; 2-Panel Door with Grill  
Air Exchanger System for Furnace  
Aluminum Heat Ducts

### Perimeter Heating System with In-Floor

Cross-Overs</strong>  
Main Water Line Shut-Off Valve  
One Exterior Faucet  
Water Shut-off Valves Where Accessible

### Flooring

Shaw Take Away Carpet  
Rebond Carpet Pad with Tackstrip  
Carpet Installation  
Shaw Vinyl Floor Coverings

### Bedrooms

Ceiling Lights LED  
Egress Window Each Bedroom  
Wire Shelving in Wardrobes  
Switched Recessed 6" LED Light  
in All Walk-In Closets

### Energy Efficient Standards

Low-E Vinyl Insulated Windows  
R-22 Fiberglass Insulation in Floor  
R-19 Fiberglass Insulation in Walls  
R-31 Avg. Blown Insulation in Ceiling  
\*\*NOTE: Spacing for Framing Members may vary due to  
Design Requirements

### Modular Features:

2x10 Transverse Floor System  
40# Roof Load  
5/12 Roof Pitch with 10" Eaves  
Architectural Shingles  
200 Amp Electrical Services  
(1) Phone Jack  
No Floor Insulation

## CUSTOMER CONTACT

Notes:

---

---

---

---

## PRINTABLE INFO SHEET

**Series: Richland ELITE Ranch**

**Model: GF3013-P**



## Standards & Features (continued)

### **Modular Features: (continued)**

Hi-Efficiency Furnace

90 MPH Wind Zone Exp. C

Wind Wrap

2x4 Interior Walls

Additional Exterior Receptacle

Low-E Argon Windows

No Blinds or Curtains

White Moulding Package

Floorplan may be altered based on building code.

## CUSTOMER CONTACT

Notes:

---

---

---

---